

## 2019–2020 School Accountability Report Card

[Translation Disclaimer](#)

### School Accountability Report Card

#### Reported Using Data from the 2019–2020 School Year

#### California Department of Education

By February 1 of each year, every school in California is required by state law to publish a School Accountability Report Card (SARC). The SARC contains information about the condition and performance of each California public school. Under the Local Control Funding Formula (LCFF) all local educational agencies (LEAs) are required to prepare a Local Control and Accountability Plan (LCAP), which describes how they intend to meet annual school-specific goals for all pupils, with specific activities to address state and local priorities. Additionally, data reported in an LCAP is to be consistent with data reported in the SARC.

- For more information about SARC requirements, see the California Department of Education (CDE) SARC web page at <https://www.cde.ca.gov/ta/ac/sa/>.
- For more information about the LCFF or LCAP, see the CDE LCFF web page at <https://www.cde.ca.gov/fg/aa/lc/>.
- For additional information about the school, parents/guardians and community members should contact the school principal or the district office.

#### DataQuest

DataQuest is an online data tool located on the CDE DataQuest web page at <https://dq.cde.ca.gov/dataquest/> that contains additional information about this school and comparisons of the school to the district and the county. Specifically, DataQuest is a dynamic system that provides reports for accountability (e.g., test data, enrollment, high school graduates, dropouts, course enrollments, staffing, and data regarding English learners).

#### California School Dashboard

The California School Dashboard (Dashboard) <https://www.caschooldashboard.org/> reflects California's new accountability and continuous improvement system and provides information about how LEAs and schools are meeting the needs of California's diverse student population. The Dashboard contains reports that display the performance of LEAs, schools, and student groups on a set of state and local measures to assist in identifying strengths, challenges, and areas in need of improvement.

#### About This School

##### Contact Information (School Year 2020–2021)

District Contact Information (School Year 2020–2021)	
District Name	Twain Harte
Phone Number	(209) 586-3772

<b>Superintendent</b>	Rick Hennes
<b>Email Address</b>	<a href="mailto:rhennes@twainharteschool.com">rhennes@twainharteschool.com</a>
<b>Website</b>	<a href="http://www.twainharteschool.com">www.twainharteschool.com</a>

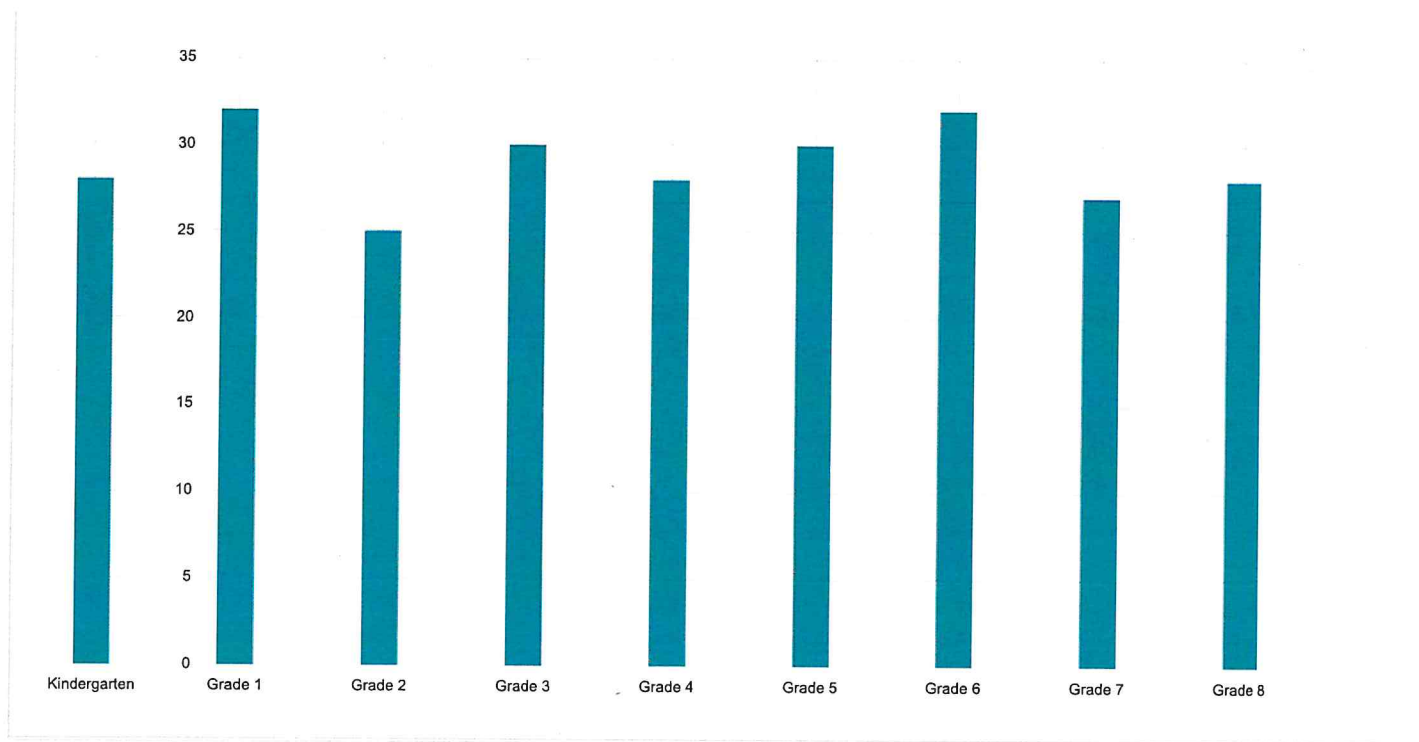
School Contact Information (School Year 2020–2021)	
<b>School Name</b>	Twain Harte
<b>Street</b>	18815 Manzanita Dr.
<b>City, State, Zip</b>	Twain Harte, Ca, 95383-9515
<b>Phone Number</b>	209-586-3266
<b>Principal</b>	Gabe Wingo, Administrator
<b>Email Address</b>	<a href="mailto:gwingo@twainharteschool.com">gwingo@twainharteschool.com</a>
<b>Website</b>	<a href="http://www.twainharteschool.com">http://www.twainharteschool.com</a>
<b>County-District-School (CDS) Code</b>	55724216115018

Last updated: 2/2/2021

#### Student Enrollment by Grade Level (School Year 2019–2020)

Grade Level	Kindergarten	Grade 1	Grade 2	Grade 3	Grade 4	Grade 5	Grade 6	Grade 7	Grade 8	Total Enrollment
<b>Number of Students</b>	28	32	25	30	28	30	32	27	28	260

--



Last updated: 2/2/2021

### Student Enrollment by Student Group (School Year 2019–2020)

Student Group	Black or African American	American Indian or Alaska Native	Asian	Filipino	Hispanic or Latino	Native Hawaiian or Pacific Islander	
Percent of Total Enrollment	%	%	%	%	17.00 %	1.90 %	7
Student Group (Other)	Socioeconomically Disadvantaged	English Learners	Students with Disabilities	Foster Youth	Homeless		
Percent of Total Enrollment	61.90 %	%	7.00 %	1.50 %	3.70 %		

### State Priority: Basic

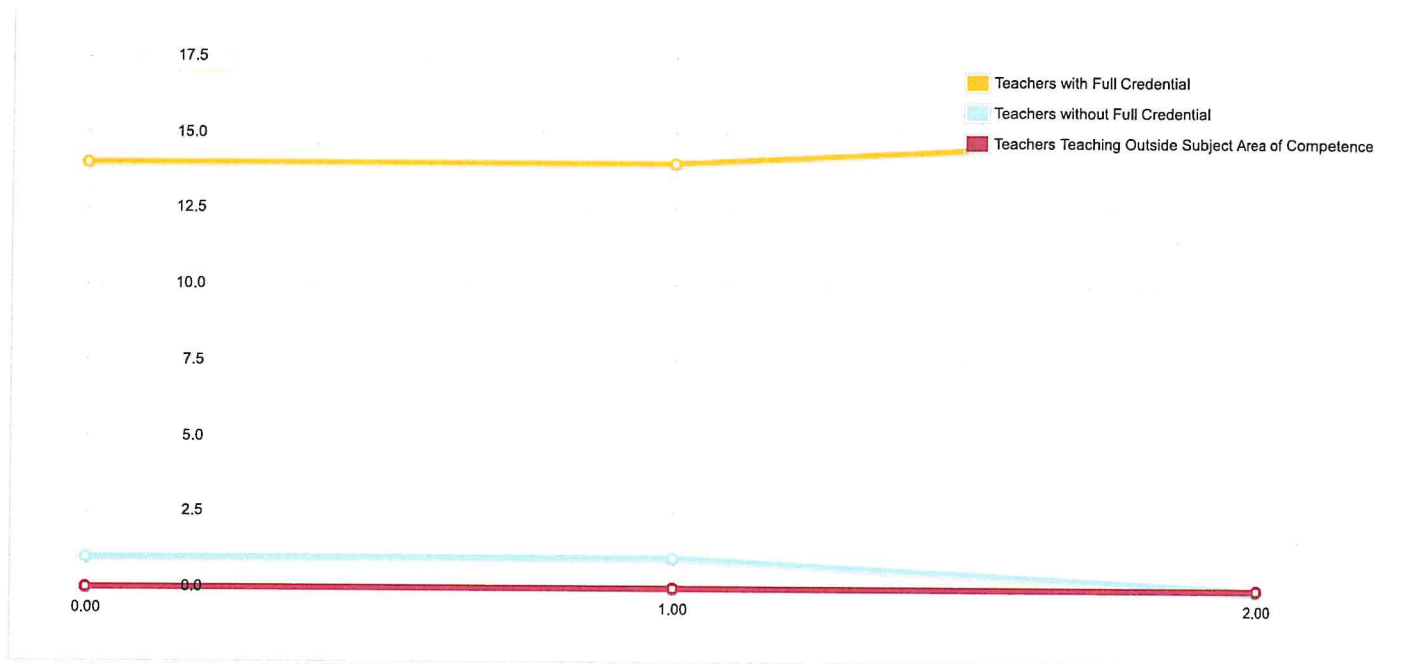
The SARC provides the following information relevant to the State priority: Basic (Priority 1):

- Degree to which teachers are appropriately assigned and fully credentialed in the subject area and for the pupils they are teaching;
- Pupils have access to standards-aligned instructional materials; and
- School facilities are maintained in good repair

### Teacher Credentials

Teachers	School 2018–2019	School 2019–2020	School 2020–2021	District 2020–2021
With Full Credential	14	14	15	15
Without Full Credential	1	1	0	0
Teachers Teaching Outside Subject Area of Competence (with full credential)	0	0	0	0

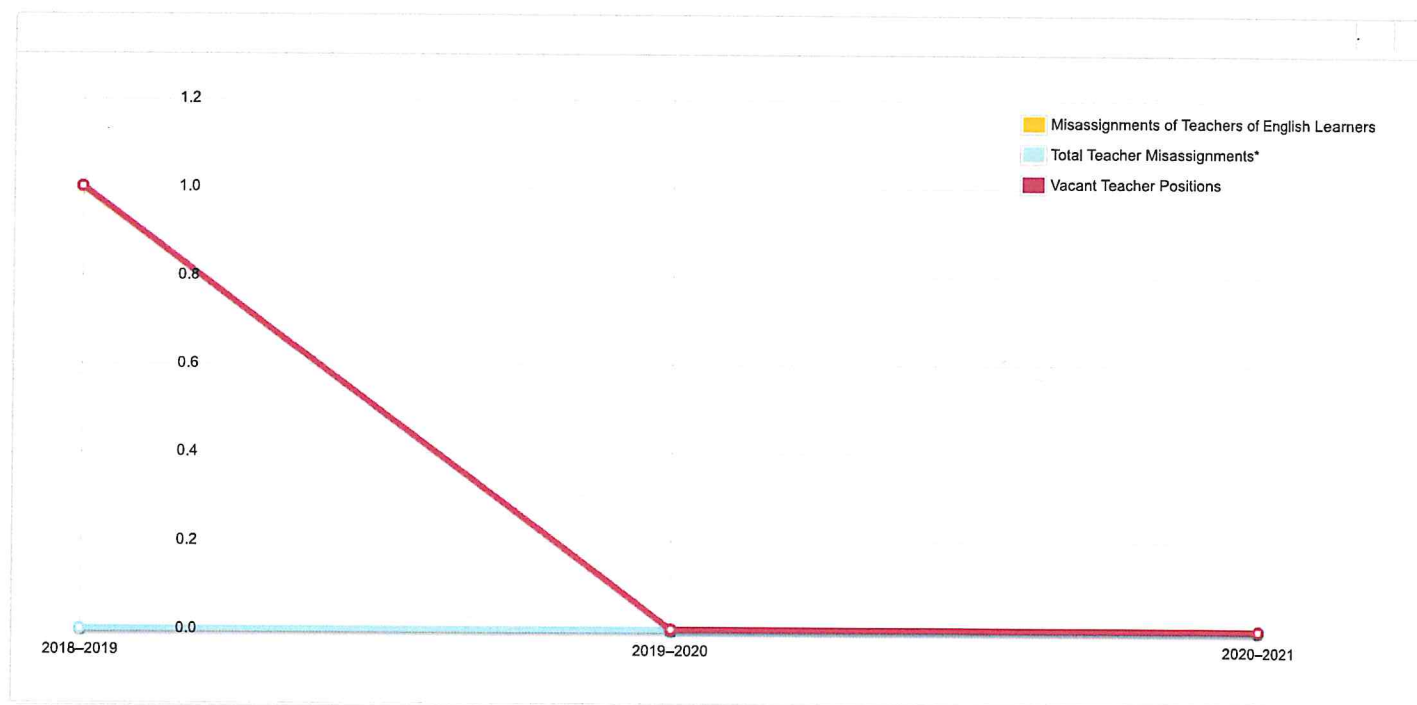
--	--



Last updated: 2/2/2021

### Teacher Misassignments and Vacant Teacher Positions

Indicator	2018-2019	2019-2020	2020-2021
Misassignments of Teachers of English Learners	0	0	0
Total Teacher Misassignments*	0	0	0
Vacant Teacher Positions	1	0	0



Note: "Misassignments" refers to the number of positions filled by teachers who lack legal authorization to teach that grade level, subject area, student group, etc.

\* Total Teacher Misassignments includes the number of Misassignments of Teachers of English Learners.

Last updated: 2/2/2021

### Quality, Currency, Availability of Textbooks and Other Instructional Materials (School Year 2020-2021)

Year and month in which the data were collected: January 2021

Subject	Textbooks and Other Instructional Materials/year of Adoption	From Most Recent Adoption?	Percent Students Lacking Own Assigned Copy
Reading/Language Arts	K-2=HMH Journeys 3-5=Benchmark Advance 6-8=Study Sync	Yes	0.00 %
Mathematics	Eureka Math	Yes	0.00 %
Science	Amplify Science	Yes	0.00 %
History-Social Science	My World	Yes	0.00 %
Foreign Language	N/A		0.00 %
Health	N/A		0.00 %
Visual and Performing Arts	N/A		0.0 %
Science Lab Eqpmt (Grades 9-12)	N/A	N/A	0.0 %

Note: Cells with N/A values do not require data.

Last updated: 2/2/2021

### School Facility Conditions and Planned Improvements

The overall condition of the school facility was rated as good on the last Facility Inspection Tool.

Last updated: 2/2/2021

### School Facility Good Repair Status

Using the **most recently collected** Facility Inspection Tool (FIT) data (or equivalent), provide the following:

- Determination of repair status for systems listed
- Description of any needed maintenance to ensure good repair
- The year and month in which the data were collected
- The rate for each system inspected
- The overall rating

Year and month of the most recent FIT report: December 2020

System Inspected	Rating	Repair Needed and Action Taken or Planned
<b>Systems:</b> Gas Leaks, Mechanical/HVAC, Sewer	Good	
<b>Interior:</b> Interior Surfaces	Poor	Some water damage on walls and ceilings. Damaged floor tiles
<b>Cleanliness:</b> Overall Cleanliness, Pest/Vermin Infestation	Good	
<b>Electrical:</b> Electrical	Good	
<b>Restrooms/Fountains:</b> Restrooms, Sinks/Fountains	Good	
<b>Safety:</b> Fire Safety, Hazardous Materials	Good	
<b>Structural:</b> Structural Damage, Roofs	Good	
<b>External:</b> Playground/School Grounds, Windows/Doors/Gates/Fences	Good	



## Overall Facility Rate

Year and month of the most recent FIT report: December 2020

Overall Rating

Good

*Last updated: 2/2/2021*

## State Priority: Pupil Achievement

The SARC provides the following information relevant to the State priority: Pupil Achievement (Priority 4):

- **Statewide assessments** (i.e., California Assessment of Student Performance and Progress [CAASPP] System, which includes the Smarter Balanced Summative Assessments for students in the general education population and the California Alternate Assessments [CAAs] for English language arts/literacy [ELA] and mathematics given in grades three through eight and grade eleven. Only eligible students may participate in the administration of the CAAs. CAAs items are aligned with alternate achievement standards, which are linked with the Common Core State Standards [CCSS] for students with the most significant cognitive disabilities); and
- The percentage of students who have successfully completed courses that satisfy the requirements for entrance to the University of California and the California State University, or career technical education sequences or programs of study.

### CAASPP Test Results in ELA and Mathematics for All Students Grades Three through Eight and Grade Eleven Percentage of Students Meeting or Exceeding the State Standard

Subject	School 2018–2019	School 2019–2020	District 2018–2019	District 2019–2020	State 2018–2019	State 2019–2020
English Language Arts / Literacy (grades 3-8 and 11)	49.0%		49.0%		50%	
Mathematics (grades 3-8 and 11)	46.0%		46.0%		39%	

Note: Cells with N/A values do not require data.

Note: The 2019–2020 data are not available. Due to the COVID-19 pandemic, Executive Order N-30-20 was issued which waived the requirement for statewide testing for the 2019–2020 school year.

Note: Percentages are not calculated when the number of students tested is ten or less, either because the number of students in this category is too small for statistical accuracy or to protect student privacy.

Note: ELA and mathematics test results include the Smarter Balanced Summative Assessment and the CAA. The "Percent Met or Exceeded" is calculated by taking the total number of students who met or exceeded the standard on the Smarter Balanced Summative Assessment plus the total number of students who met the standard (i.e., achieved Level 3-Alternate) on the CAAs divided by the total number of students who participated in both assessments.

*Last updated: 2/2/2021*

**CAASPP Test Results in ELA by Student Group**  
**Grades Three through Eight and Grade Eleven (School Year 2019–2020)**

Student Group	Total Enrollment	Number Tested	Percent Tested	Percent Not Tested	Percent Met or Exceeded
All Students					
Male					
Female					
Black or African American					
American Indian or Alaska Native					
Asian					
Filipino					
Hispanic or Latino					
Native Hawaiian or Pacific Islander					
White					
Two or More Races					
Socioeconomically Disadvantaged					
English Learners					
Students with Disabilities					
Students Receiving Migrant Education Services					
Foster Youth					
Homeless					

Note: Cells with N/A values do not require data.

Note: The 2019–2020 data are not available. Due to the COVID-19 pandemic, Executive Order N-30-20 was issued which waived the requirement for statewide testing for the 2019–2020 school year.

*Last updated: 2/2/2021*

**CAASPP Test Results in Mathematics by Student Group**  
**Grades Three through Eight and Grade Eleven (School Year 2019–2020)**

Student Group	Total Enrollment	Number Tested	Percent Tested	Percent Not Tested	Percent Met or Exceeded
All Students					
Male					
Female					
Black or African American					
American Indian or Alaska Native					
Asian					
Filipino					
Hispanic or Latino					
Native Hawaiian or Pacific Islander					
White					
Two or More Races					
Socioeconomically Disadvantaged					
English Learners					
Students with Disabilities					
Students Receiving Migrant Education Services					
Foster Youth					
Homeless					

Note: Cells with N/A values do not require data.

Note: The 2019–2020 data are not available. Due to the COVID-19 pandemic, Executive Order N-30-20 was issued which waives the requirement for statewide testing for the 2019–2020 school year.

*Last updated: 2/2/2021*



**CAASPP Test Results in Science for All Students**  
**Grades Five, Eight and High School**  
**Percentage of Students Meeting or Exceeding the State Standard**

Subject	School 2018–2019	School 2019–2020	District 2018–2019	District 2019–2020	State 2018–2019	State 2019–2020
Science (grades 5, 8, and high school)	33		33		30	

Note: Cells with N/A values do not require data.

Note: The 2019–2020 data are not available. Due to the COVID-19 pandemic, Executive Order N-30-20 was issued which waived the requirement for statewide testing for the 2019–2020 school year.

Note: The new California Science Test (CAST) was first administered operationally in the 2018–2019 school year.

*Last updated: 2/2/2021*

**CAASPP Tests Results in Science by Student Group**  
**Grades Five, Eight and High School (School Year 2019–2020)**

Student Group	Total Enrollment	Number Tested	Percent Tested	Percent Not Tested	Percent Met or Exceeded
All Students	N/A	N/A	N/A	N/A	N/A
Male	N/A	N/A	N/A	N/A	N/A
Female	N/A	N/A	N/A	N/A	N/A
Black or African American	N/A	N/A	N/A	N/A	N/A
American Indian or Alaska Native	N/A	N/A	N/A	N/A	N/A
Asian	N/A	N/A	N/A	N/A	N/A
Filipino	N/A	N/A	N/A	N/A	N/A
Hispanic or Latino	N/A	N/A	N/A	N/A	N/A
Native Hawaiian or Pacific Islander	N/A	N/A	N/A	N/A	N/A
White	N/A	N/A	N/A	N/A	N/A
Two or More Races	N/A	N/A	N/A	N/A	N/A
Socioeconomically Disadvantaged	N/A	N/A	N/A	N/A	N/A
English Learners	N/A	N/A	N/A	N/A	N/A
Students with Disabilities	N/A	N/A	N/A	N/A	N/A
Students Receiving Migrant Education Services	N/A	N/A	N/A	N/A	N/A
Foster Youth	N/A	N/A	N/A	N/A	N/A
Homeless	N/A	N/A	N/A	N/A	N/A

Note: Cells with N/A values do not require data.

Note: The 2019–2020 data are not available. Due to the COVID-19 pandemic, Executive Order N-30-20 was issued which waived the requirement for statewide testing for the 2019–2020 school year.

**State Priority: Other Pupil Outcomes** *Last updated: 2/2/2021*

The SARC provides the following information relevant to the State priority: Other Pupil Outcomes (Priority 8):

- Pupil outcomes in the subject area of physical education

**California Physical Fitness Test Results (School Year 2019–2020)**

Grade Level	Percentage of Students Meeting Four of Six Fitness Standards	Percentage of Students Meeting Five of Six Fitness Standards	Percentage of Students Meeting Six of Six Fitness Standards
-------------	--	--	---

Note: Cells with N/A values do not require data.

Note: The 2019–2020 data are not available. Due to the COVID-19 pandemic, Executive Order N-56-20 was issued which waived the requirement to administer the physical fitness performance test for the 2019–2020 school year.

Last updated: 2/2/2021

### State Priority: Parental Involvement

The SARC provides the following information relevant to the State priority: Parental Involvement (Priority 3):

- Efforts the school district makes to seek parent input in making decisions for the school district and each school site

#### Opportunities for Parental Involvement (School Year 2020–2021)

Twain Harte School has an active parent group, Parents at Twain Harte School (PATHS). Parents wishing to be more involved should contact the school office for more information.

Last updated: 2/2/2021

### State Priority: Pupil Engagement

The SARC provides the following information relevant to the State priority: Pupil Engagement (Priority 5):

- High school dropout rates; and
- High school graduation rates

### State Priority: School Climate

The SARC provides the following information relevant to the State priority: School Climate (Priority 6):

- Pupil suspension rates;
- Pupil expulsion rates; and
- Other local measures on the sense of safety

#### Suspensions and Expulsions (data collected between July through June, each full school year respectively)

Rate	Suspensions	Expulsions
School 2017–2018	5.10%	0.70%
School 2018–2019	4.30%	0.30%
District 2017–2018	5.10%	0.70%
District 2018–2019	4.30%	0.30%
	3.50%	0.10%
	3.50%	0.10%

State 2017–2018  
 Suspensions and Expulsions for School Year 2019–2020 Only  
 State 2018–2019  
 (data collected between July through February, partial school year due to the COVID-19 pandemic)

Rate	Suspensions	Expulsions
School 2019–2020	2.80%	0.00%
District 2019–2020	2.80%	0.00%
	2.50%	0.10%

State  
2019–2020

Note: The 2019–2020 suspensions and expulsions rate data are not comparable to prior year data because the 2019–2020 school year is a partial school year due to the COVID-19 crisis. As such, it would be inappropriate to make any comparisons in rates of suspensions and expulsions in the 2019–2020 school year compared to prior years.

Last updated: 2/2/2021

### School Safety Plan (School Year 2020–2021)

The school safety plan is reviewed annually by our school site council and presented to the staff prior to board approval at the February board meeting. Our plan is available for review by the public at the school office and outlines safety measures to take in the event of an emergency.

The information in this section is required to be in the SARC but is not included in the state priorities for LCFF.

Last updated: 2/2/2021

### Average Class Size and Class Size Distribution (Elementary) School Year (2017–2018)

Grade Level	K	1	2	3	4	5	6	Other**
Average Class Size	13.00	19.00	14.00	21.00	30.00	33.00	18.00	
Number of Classes * 1-20	2	2	1	1	1	1	1	
Number of Classes * 21-32						1	1	

Number of Classes \* \* Number of classes indicates how many classes fall into each size category (a range of total students per class).  
33+ \*\* "Other" category is for multi-grade level classes.

### Average Class Size and Class Size Distribution (Elementary) School Year (2018–2019)

Grade Level	K	1	2	3	4	5	6	Other**
Average Class Size	19.00	19.00	21.00	23.00	29.00	23.00	31.00	
Number of Classes * 1-20	2	2	1	1	1	2	1	
Number of Classes * 21-32						0		

Number of Classes \* \* Number of classes indicates how many classes fall into each size category (a range of total students per class).  
33+ \*\* "Other" category is for multi-grade level classes.

### Average Class Size and Class Size Distribution (Elementary) School Year (2019–2020)

K	1	2	3	4	5	6	Other**
15.00	24.00	28.00	22.00	28.00	23.00	32.00	
2	2				2		
		2	2	1		1	

**Grade Level****Average Class Size**

**Number of Classes \***  
1-20

**Number of Classes \***  
21-32

**Number of Classes \***  
33+

\* Number of classes indicates how many classes fall into each size category (a range of total students per class).

\*\* "Other" category is for multi-grade level classes.

Last updated: 2/2/2021

**Average Class Size and Class Size Distribution (Secondary) (School Year 2017–2018)**

Subject	English	Mathematics	Science	Social Science
<b>Average Class Size</b>	32.00	32.00	32.00	32.00
<b>Number of Classes *</b>				
1-22	2	2	2	2
<b>Number of Classes *</b>				
23-32				
<b>Number of Classes *</b>				
33+				

\* Number of classes indicates how many classrooms fall into each size category (a range of total students per classroom). At the secondary school level, this information is reported by subject area rather than grade level.

**Average Class Size and Class Size Distribution (Secondary) (School Year 2018–2019)**

Subject	English	Mathematics	Science	Social Science
<b>Average Class Size</b>	32.00	32.00	32.00	32.00
<b>Number of Classes *</b>				
1-22	2	2	2	2
<b>Number of Classes *</b>				
23-32				
<b>Number of Classes *</b>				
33+				

\* Number of classes indicates how many classrooms fall into each size category (a range of total students per classroom). At the secondary school level, this information is reported by subject area rather than grade level.

**Average Class Size and Class Size Distribution (Secondary) (School Year 2019–2020)**

Subject	English	Mathematics	Science	Social Science
<b>Average Class Size</b>	32.00	32.00	32.00	32.00
<b>Number of Classes *</b>				
1-22	2	2	2	2
<b>Number of Classes *</b>				
23-32				
<b>Number of Classes *</b>				
33+				

\* Number of classes indicates how many classrooms fall into each size category (a range of total students per classroom). At the secondary school level, this information is reported by subject area rather than grade level.

Last updated: 2/2/2021

**Student Support Services Staff (School Year 2019–2020)**



**Number of FTE\* Assigned to School**

Counselor (Academic, Social/Behavioral or Career Development)	1.40
Library Media Teacher (Librarian)	1.00
Library Media Services Staff (Paraprofessional)	
Psychologist	0.40
Social Worker	
Nurse	
Speech/Language/Hearing Specialist	0.40
Resource Specialist (non-teaching)	
Other	

\*One full time equivalent (FTE) equals one staff member working full time; one FTE could also represent two staff members who each work 50 percent of full time.

*Last updated: 2/2/2021*

**Expenditures Per Pupil and School Site Teacher Salaries (Fiscal Year 2018–2019)**

Level	Total Expenditures Per Pupil	Expenditures Per Pupil (Restricted)	Expenditures Per Pupil (Unrestricted)	Average Teacher Salary
School Site	\$15609.00	\$3723.00	\$11886.00	\$86552.00
District	N/A	N/A	\$11886.00	\$86552.00
Percent Difference – School Site and District	N/A	N/A	0.00%	0.00%
State	N/A	N/A	\$7750.12	\$71448.00
Percent Difference – School Site and State	N/A	N/A	53.00%	21.00%

Note: Cells with N/A values do not require data.

*Last updated: 2/2/2021*

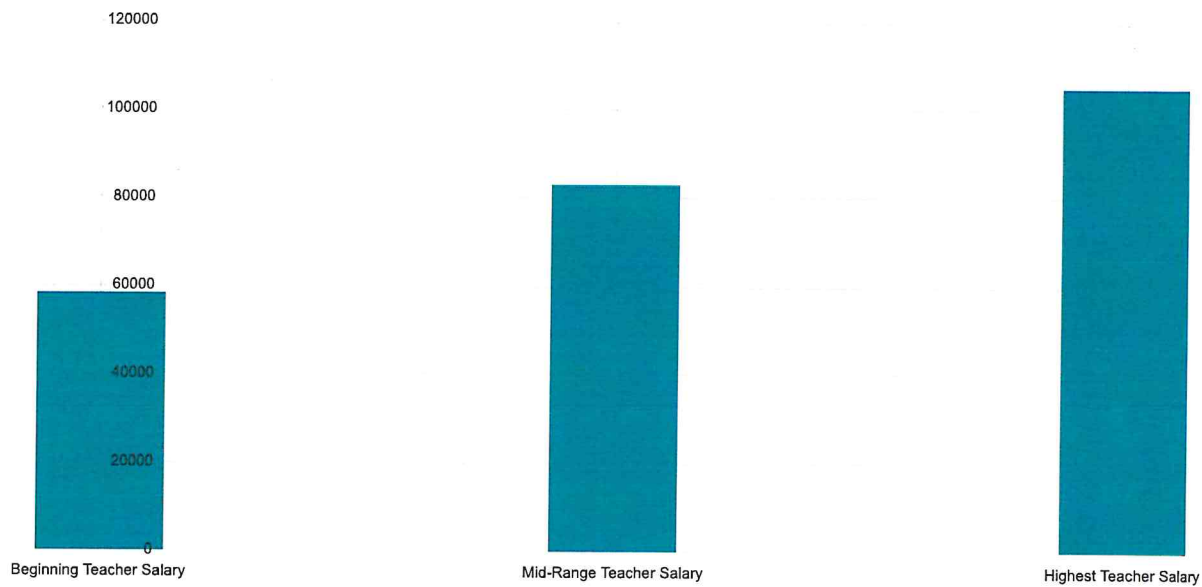


## Teacher and Administrative Salaries (Fiscal Year 2018–2019)

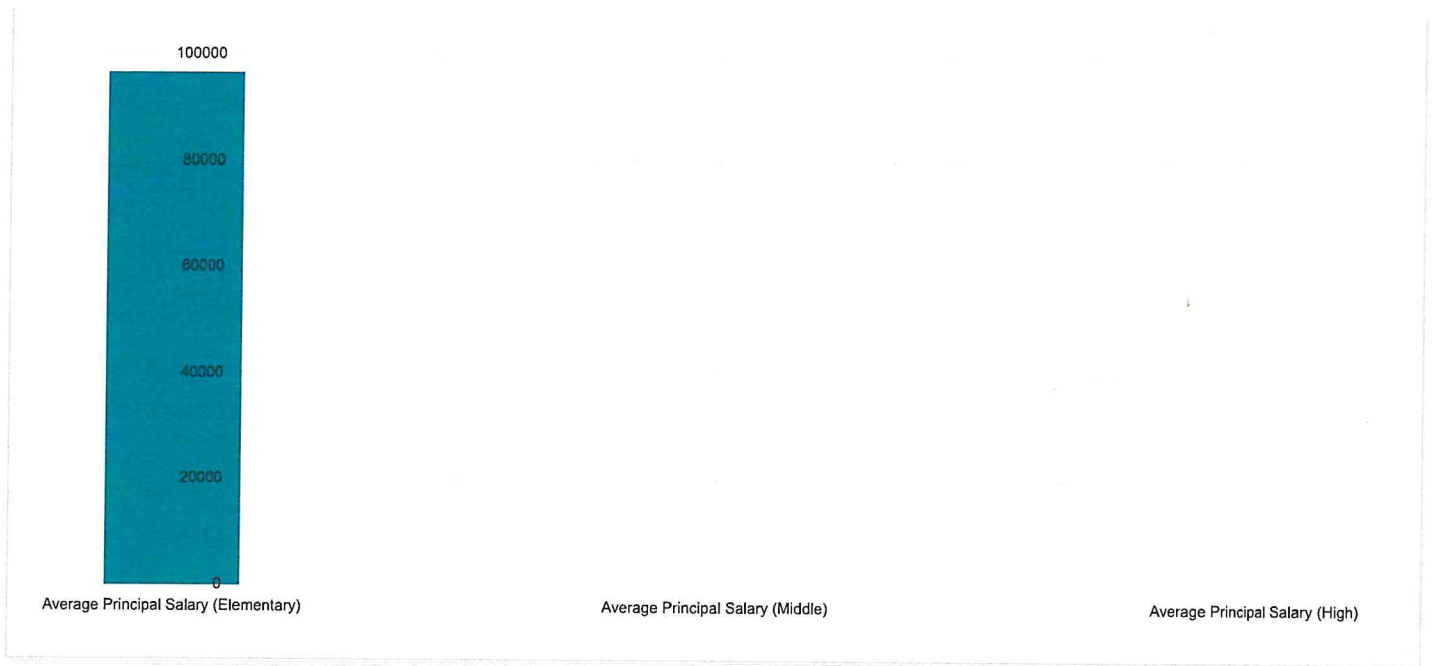
Category	District Amount	State Average For Districts In Same Category
Beginning Teacher Salary	\$58,343	\$46,965
Mid-Range Teacher Salary	\$82,986	\$67,638
Highest Teacher Salary	\$105,199	\$88,785
Average Principal Salary (Elementary)	\$96,515	\$112,524
Average Principal Salary (Middle)	\$	\$117,471
Average Principal Salary (High)	\$	--
Superintendent Salary	\$45,022	\$128,853
Percent of Budget for Teacher Salaries	41.00%	30.00%
Percent of Budget for Administrative Salaries	5.00%	6.00%

For detailed information on salaries, see the CDE Certificated Salaries & Benefits web page at <https://www.cde.ca.gov/ds/fd/cs/>.

**Teacher Salary Chart**



**Principal Salary Chart**



Last updated: 2/2/2021

## Professional Development

Measure	2018–2019	2019–2020	2020–2021
Number of school days dedicated to Staff Development and Continuous Improvement	5	5	3

Questions: SARC TEAM | [sarc@cde.ca.gov](mailto:sarc@cde.ca.gov) | 916-319-0406

California Department of Education  
1430 N Street  
Sacramento, CA 95814